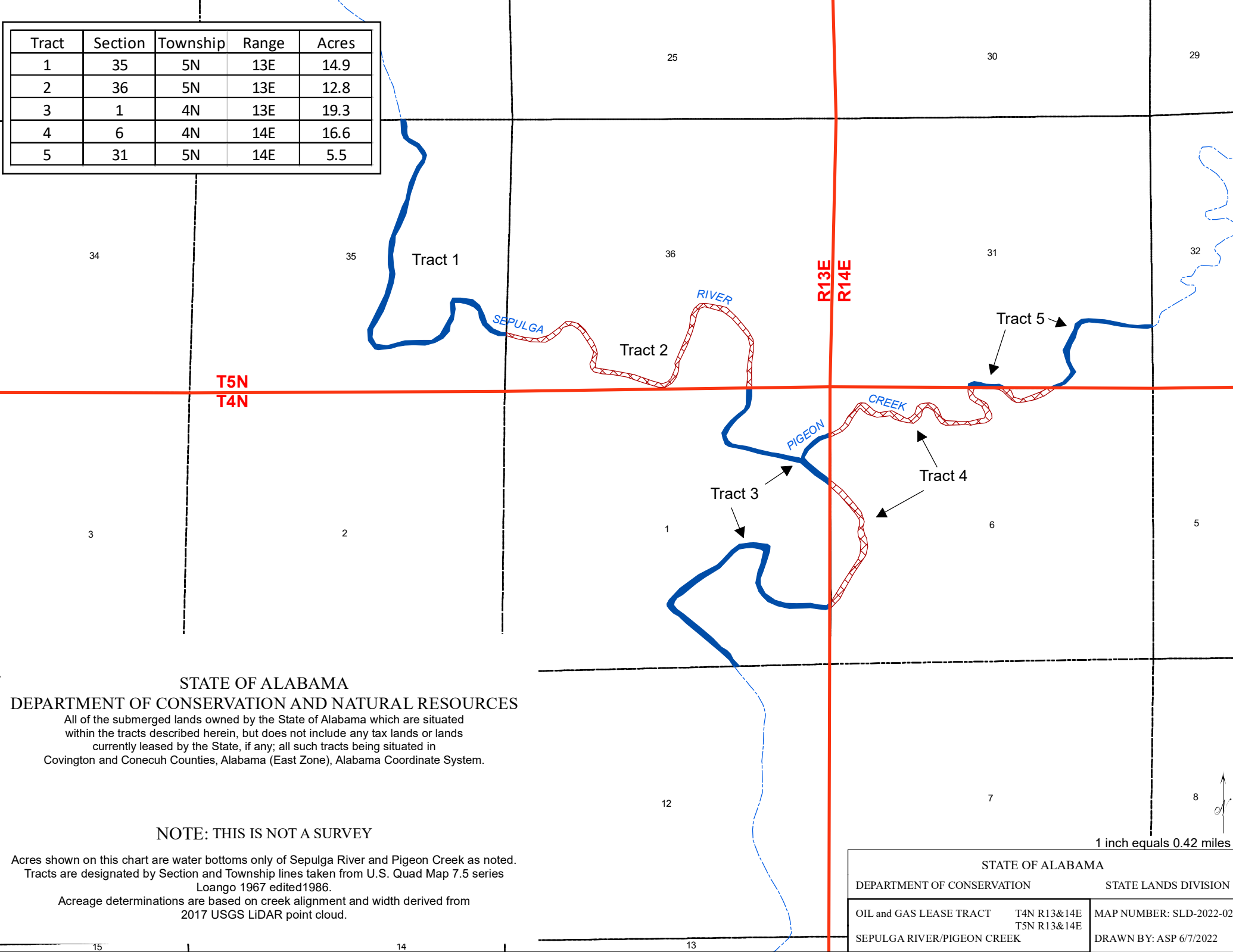


Tract	Section	Township	Range	Acres
1	35	5N	13E	14.9
2	36	5N	13E	12.8
3	1	4N	13E	19.3
4	6	4N	14E	16.6
5	31	5N	14E	5.5



STATE OF ALABAMA  
DEPARTMENT OF CONSERVATION AND NATURAL RESOURCES  
All of the submerged lands owned by the State of Alabama which are situated within the tracts described herein, but does not include any tax lands or lands currently leased by the State, if any; all such tracts being situated in Covington and Conecuh Counties, Alabama (East Zone), Alabama Coordinate System.

NOTE: THIS IS NOT A SURVEY

Acres shown on this chart are water bottoms only of Sepulga River and Pigeon Creek as noted. Tracts are designated by Section and Township lines taken from U.S. Quad Map 7.5 series Loango 1967 edited 1986. Acreage determinations are based on creek alignment and width derived from 2017 USGS LiDAR point cloud.

1 inch equals 0.42 miles

STATE OF ALABAMA		
DEPARTMENT OF CONSERVATION		STATE LANDS DIVISION
OIL and GAS LEASE TRACT	T4N R13&14E	MAP NUMBER: SLD-2022-02
SEPULGA RIVER/PIGEON CREEK	T5N R13&14E	DRAWN BY: ASP 6/7/2022